

# Secure4 Multi-Drug Test Cups

## A reliable, rapid, cost-effective drug detection solution

AS 4308:2008  
Compliance Certified



- Compliance Certified to Australian Standard AS 4308:2008
- Rapid, accurate, results in approx. 5 mins
- Up to 27 month shelf life

The *Secure4 Multi-Drug Test Cup* is a lateral flow, a rapid, qualitative, competitive immunoassay for the determination of Drug-of-Abuse (DOA) and/or their metabolites in human urine.

The device allows the detection of multiple drugs and includes a key-activated split urine cup, which allows the specimen to be shipped directly to a laboratory for further testing. Also included is a tamper-proof seal and temperature control.

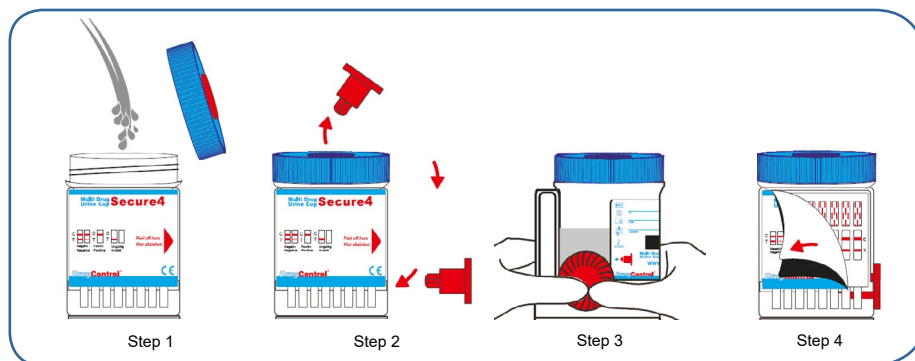
### Secure4 screens for the following drugs:

- THC (marijuana)
- Methamphetamines (ice, ecstasy)
- Amphetamines (speed)
- Morphine (heroin, morphine, codeine)
- Cocaine
- Benzodiazepines

### Additional Benefits:

- No manual handling of specimen (hygienic and reduces potential for contamination)
- In-built temperature and adulteration indication panels
- Sterile - individually pouched

### Simple, rapid, 4-step testing procedure:



made  
in  
Germany

### Cut-off Levels

THC 50 ng/ml, COC 300 ng/ml, OPI 300 ng/ml, AMP 300 ng/ml, MET 300 ng/ml, BZ 200 ng/ml.